

## UNIVERSAL MOTION COMPONENTS

### QUALITY IRRIGATION PRODUCTS

ISO 9001:2000 CERTIFIED

2920 Airway Ave, Costa Mesa, Ca. 92626  
phone: 714.437.9600 fax: 714.437.9700



## BT - 4B TOWABLE HUB

Heavy duty / Extended length



### PIN BRACKET KIT

SOLD SEPARATELY

## THE NEXT GENERATION

## OF THE BOLT - ON TOWABLE HUB.

### Evaluation Specifications

#### Towable Hub

- ★ NEW: Extended length design provides greater bearing spacing, allowing for increased load requirements.
- ★ Converts standard center-pivot final drives into towables.
- ★ Bearing pre-load is set using a SAE lock nut and washers.
- ★ Heavy duty cast steel shaft and cast iron hub.
- ★ Grease and pressure relief fittings included.

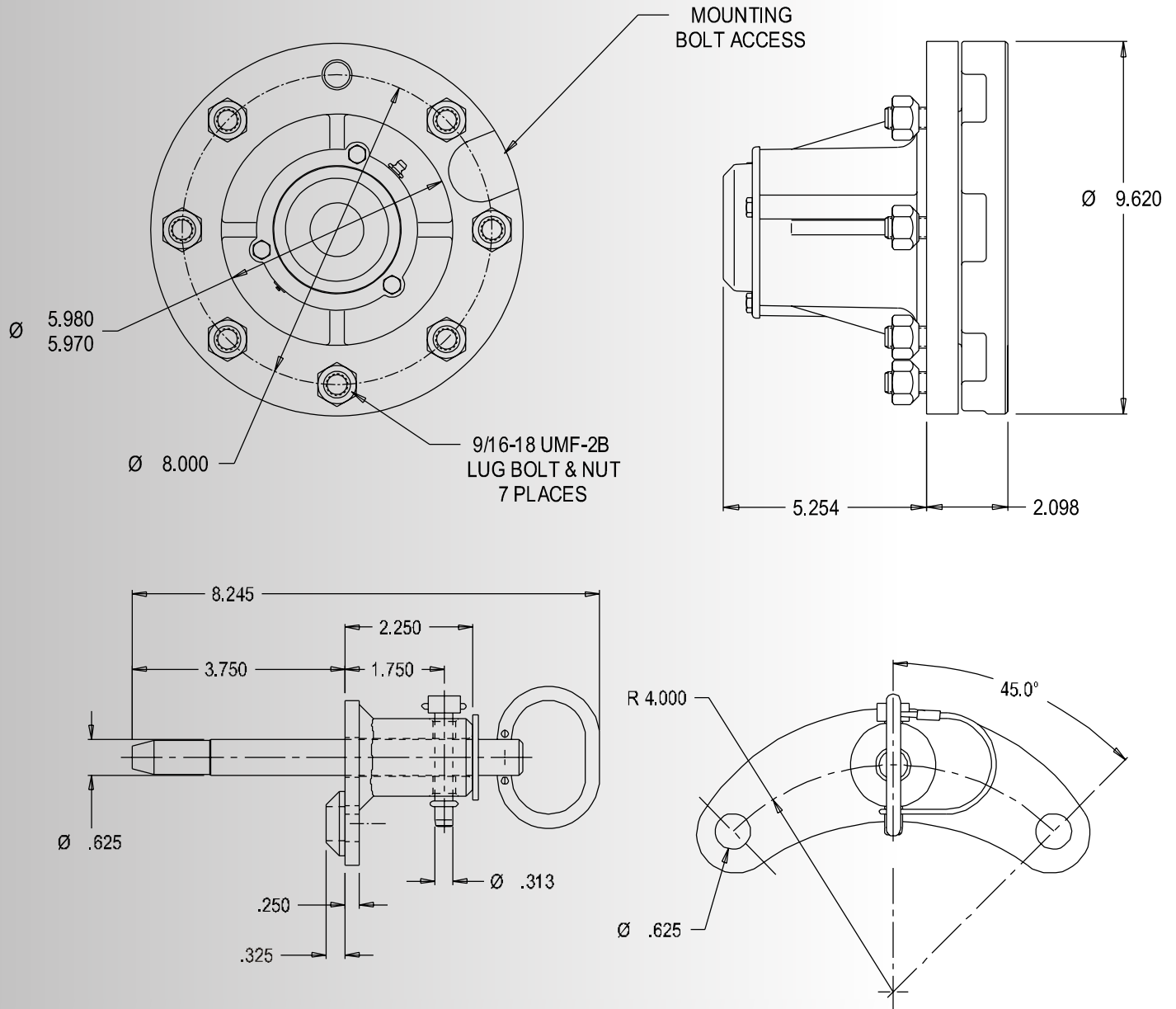
- ★ Bolt-in hub cap secured with three 1/4-20 bolts and sealed with silicone RTV.

#### Pin Bracket KIT

- ★ Designed to work with tow hubs & towable gearboxes.
- ★ High strength pin to reduce wear.
- ★ Heavy duty retainer clip.
- ★ Fits standard eight bolt rim.

CONTACT UMC AT [SALES@UMCPRODUCTS.COM](mailto:SALES@UMCPRODUCTS.COM)

# Dimensional Drawing BT - 4B Towable Hub & Pin Bracket Assembly



CONTACT UMC AT [SALES@UMCPRODUCTS.COM](mailto:SALES@UMCPRODUCTS.COM)



Universal Motion Components, Co. Inc.  
2920 Airway Ave, Costa Mesa, Ca. 92626  
Phone: 714.437.9600 Fax: 714.437.9700  
Web: <http://www.umcproducts.com>  
E-mail: [sales@umcproducts.com](mailto:sales@umcproducts.com)